

**FUNDPRO** for Windows

## HELP - Demo

**1 - Month Trial \$49.00**

**To Order or For Additional Information Call!**

**1 - 800 - 251 - FUND(3863)**

Compuserve Address:74352.3530

America On-line:jacobma

E-mail:74352.3530@compuserve.com

Internet:jacobma@netcom.com

Click on desired text for help



ONLINE BOOK:

TABLE OF CONTENTS (demo only covers ch3&4)



FUNDS COVERED (900 +)



ORDERING INFORMATION

# ***TABLE OF CONTENTS***

**Only chapters 3 and 4 are included to give you a feel for the program.  
Complete product includes a 18 chapter manual on-line.**

CHAPTER 1 - 2 EXCLUDED IN DEMO

CHAPTER 3 FUNDAMENTALS

CHAPTER 4 TUTORIAL

CHAPTER 5 - 18 EXCLUDED IN DEMO

*[Click here for breakdown of sections](#)*

# ***TABLE OF CONTENTS***

CHAPTER 1 - 2 EXCLUDED IN DEMO

## **CHAPTER 3 FUNDAMENTALS**

- 3.1 STARTING OUT
- 3.2 TOOL BAR
- 3.3 DRAW BAR
- 3.4 STATUS BAR
- 3.5 FUND GROUPS
- 3.6 CURRENT FUND
- 3.7 ACTIVE INDICATOR WINDOW

## **CHAPTER 4 TUTORIAL**

- 4.1 OPENING A FUND GROUP
- 4.2 GROUP WINDOW OVERVIEW
- 4.3 SELECTING AN INDICATOR
  - 4.3.1 EDITING INDICATOR PARAMETERS - MAIN
  - 4.3.2 EDITING INDICATOR PARAMETERS - STATISTICS
  - 4.3.3 SELECTING AN INDICATOR
- 4.4 TIMING INDICATORS
- 4.5 DRAWING FUNCTIONS
- 4.6 FUND DESCRIPTION
- 4.7 LOAD INDIVIDUAL FUND
- 4.8 STATISTIC GROUPS
  - 4.8.1 CREATING STATISTIC GROUPS
  - 4.8.2 STATISTICS WINDOW
- 4.9 WINDOWING COMMANDS
- 4.10 FUNDPRO DOWNLOADER - not included for use in demo
- 4.11 LATEST PRICING
- 4.12 CONCLUSION

CHAPTER 5 - 18 EXCLUDED IN DEMO

**FUNDPRO** for Windows

**1 - Month Trial \$49.00**

**To Order or For Additional Information Call!**

**1 - 800 - 251 - FUND(3863)**

**Compuserve Address:74352.3530  
America On-line:jacobma  
E-mail:74352.3530@compuserve.com  
Internet:jacobma@netcom.com**

**MANHATTAN ANALYTICS, INC.  
912 Manhattan Avenue, 2nd Floor  
Manhattan Beach, CA 90266**



# CHAPTER 3

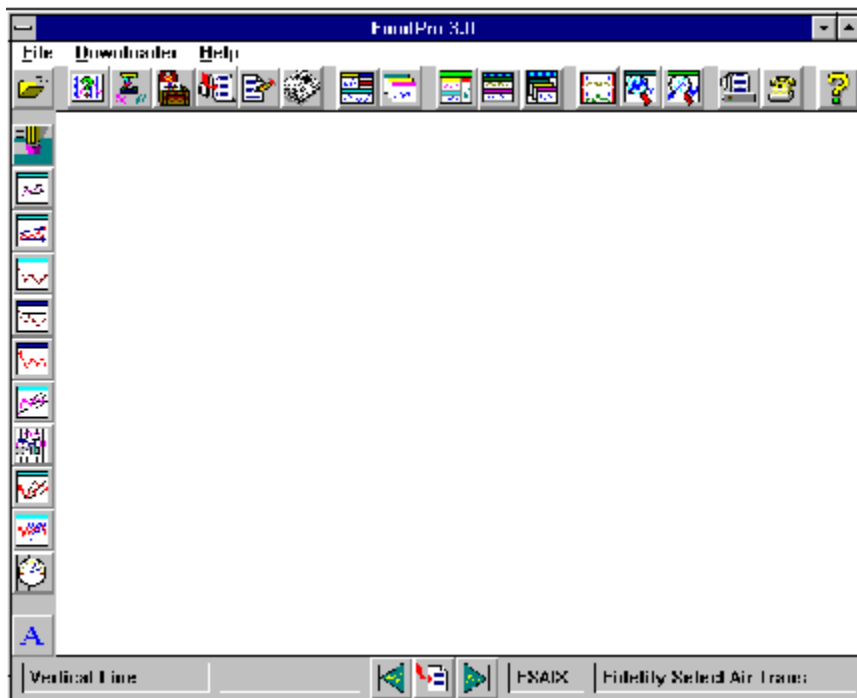
## Chapter 3.Fundamentals

*Do Not Skip This Section*

### 3.1 Starting Out

When you begin FundPro, the following screen will be displayed.

**Note:** *If the Autoload feature was previously selected from the fund groups dialog box, a fund group will be loaded on startup and a mutual fund's price history will be displayed.*



There are three icon bars which simplify access to the most commonly used features of FundPro:

1. **Tool Bar** - Provides access to the primary functionality of the program including the various statistics, indicators, and windowing commands.
2. **Draw Bar** - Provides access to the various drawing commands including Trendlines and Fibonacci Arcs.
3. **Status Bar** - Displays helpful information in its different windows and allows for selection of the Current Fund.

**Note:** *If there are no fund groups open, there are only four options available: **Fund Groups, Downloader, Help, Exit.***



## 3.2 Tool Bar

The *Tool Bar* provides push button access to the major functionality of FundPro. It is located near the top of the program window and can be toggled On or Off from the Windows menu.

The Tool Bar is composed of the following items in the order of their appearance from left to right.



1. **Fund Groups Icon:** Allows you to open, add, delete, and edit a fund group.
2. **Indicators Icon:** Allows you to select and edit indicators for the active fund group.
3. **Statistic Groups Icon:** Allows you to open, add, delete, and edit a statistic group.
4. **Fund Portfolios Icon:** Allows you to open, add, delete, and edit a fund portfolio for the active fund group.
5. **Load Individual Fund Icon:** Allows you to display any fund from the FundPro database.
6. **Fund Description Icon:** Displays a brief description of the Current Fund.
7. **Latest Pricing Icon:** Displays the most current day's pricing for the funds in the active fund group.



8. **Tile Fund Groups Icon:** Tiles the fund group windows to fill the available area of FundPro.
9. **Cascade Fund Groups Icon:** Cascades the fund group windows within the available area of FundPro.
10. **Tile Child Windows Icon:** Tiles the child windows to fill the active fund group window.
11. **Stack Child Windows Icon:** Stacks the child windows vertically to fill the active fund group window.
12. **Cascade Child Windows Icon:** Cascades the child windows within the active fund group window.



13. **Align Dates Icon:** Sets the period displayed for all indicator windows within a fund group window to the period of the active indicator window.
14. **Zoom In Icon:** Allows you to zoom-in on a specific period within the active indicator window.
15. **Zoom Out Last Icon:** Allows you to zoom back to the previous period if one was defined, otherwise the entire loaded history will be displayed.



16. **Print Icon:** Enables you to print any window of the active fund group.
17. **FundPro Downloader Icon:** Starts the FundPro Downloader where you can update your database and transmit messages to and from Manhattan Analytics.
18. **Help Icon:** Opens the on-line Help file.



### 3.3 Draw Bar

The *Draw Bar* provides push button access to the drawing functions of FundPro. It is located on the left edge of the program window and can be toggled On or Off from the Windows menu.

The Draw Bar is composed of the following commands in the order of their appearance from top to bottom.



ERASE



TRENDLINE



EXTENDED TREND LINE



VERTICAL LINE



HORIZONTAL LINE



INTERSECTING LINES



PITCHFORK



CYCLE LINES



FIBONACCI FANS



FIBONACCI ARCS



FIBONACCI TIME ZONES



TEXT

**Note:** *The text icon is not displayed on monitors with a resolution less than 800 x 600.*





### 3.4 Status Bar

The *Status Bar* displays information to assist you in the use of FundPro. It is located on the bottom of the program window and can be toggled On or Off from the Windows menu.

The Status Bar is composed of the following items in the order of their appearance from left to right.

1. **Icon Information Window** - Displays the name of the icon over which the mouse is positioned. This allows you to quickly determine the function of an icon by positioning the cursor over it.
2. **Drawing Function Information Window** - Displays the status of the selected drawing function. For example, when the Fibonacci Arc function is chosen, you are prompted to "Select First Point."
3. **Previous Fund Icon** - Sets the Current Fund to the previous fund in the fund group.
4. **Select Current Fund Icon** - Allows you to directly select the Current Fund from the funds in the fund group.
5. **Next Fund Icon** - Sets the Current Fund to the next fund in the fund group.
6. **Symbol Window** - Displays the symbol of the Current Fund.
7. **Fund Name Window** - Displays the name of the Current Fund.





## 3.5 Fund Groups

FundPro is designed around the concept of *fund groups*. Nearly all aspects of the program revolve around the fund group. Understanding this concept is fundamental to effectively using FundPro.

*A fund group is comprised of the following:*

- \* **Name** - The name of the fund group which is located on the fund group window title bar.
- \* **Set of funds** - The mutual funds to be analyzed.
- \* **Benchmark** - A fund or index against which the funds in the group are compared. The Benchmark is located following the fund group name on the fund group window title bar.
- \* **Period** - The length of time the funds in the group are to be loaded.

**Note:** A fund group must be opened before any analysis can be performed.

A fund group contains a set of funds with a defined Benchmark. The funds in the group are selected from the FundPro database. The Benchmark for the group is a fund or index against which the funds in the group are compared. For example, to analyze the funds in the group against the market, you can select a mutual fund that approximates the market to be the Benchmark, like Fidelity's US Equity, FUSEX. **Remember, for your data to have meaning, choose a suitable benchmark.**

**Note:** *To aid in your analysis of mutual funds, FundPro also tracks many accepted market indexes, such as the S&P 500. FundPro allows you to select any fund or index in the database to serve as the Benchmark. One word of caution when using true indexes as benchmarks: investing in an index is not comparable to investing in a mutual fund.*

FundPro comes with fund groups for over 150 of the most popular mutual fund families. For example, the Fidelity Investments group contains over 100 Fidelity Mutual Funds. Additionally, FundPro includes fund groups for over 20 investment objectives, such as Aggressive Growth and Income.

**Note:** *Multiple fund group can be open simultaneously.*

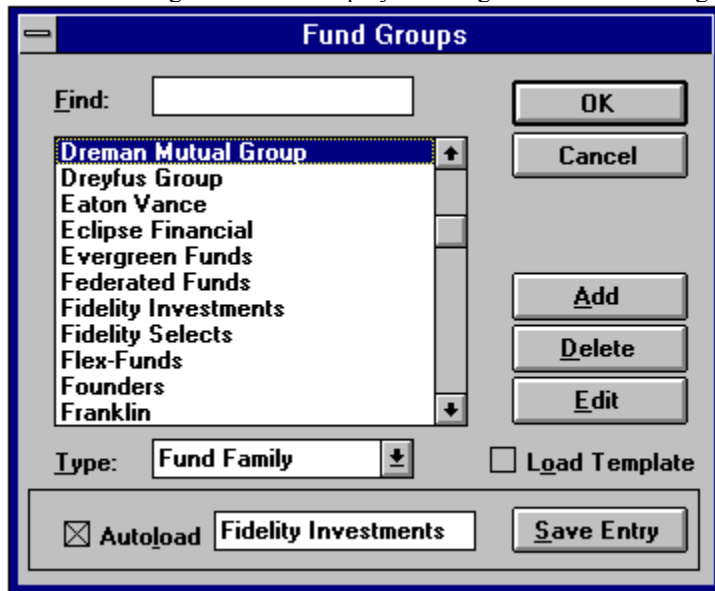


To open a fund group:

1. Choose **Fund Groups** from the Tool Bar or the File menu.



A dialog box will be displayed listing the available fund groups.



2. Select a fund group from the list.
3. Click on **Ok**.  
This will create a fund group window and load the funds in the group.  
A Price History indicator will be opened displaying the performance of the Current Fund versus the Benchmark.

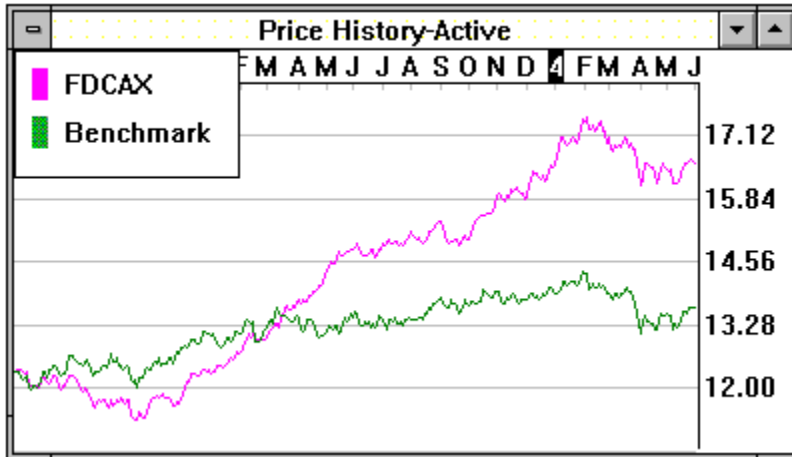
The name of the fund group and the Benchmark are displayed on the title bar of the fund group window while the name and symbol of the Current Fund are displayed on the Status Bar. Once a fund group is loaded, analysis can be performed on the funds within the group.



### 3.6 Current Fund

The *Current Fund* is the fund upon which the various indicators (Price History, MACD, etc.) operate. When a fund group is opened, the first fund in the group becomes the *Current Fund*.

For example, assume that the Current Fund is FDCAX (Fidelity Capital Appreciation) and that the Benchmark is FMAGX (Fidelity Magellan). If the Price History chart is displayed, the two items charted are the Current Fund, FDCAX, and the Benchmark, FMAGX.





### 3.7 Active Indicator Window

The *active indicator window* is the window within the active fund group window that receives commands from the icon bars or the menu. Only an indicator window (Price History, Relative Strength, etc.) can be the Active Window.

**The active indicator window is used by:**

- \* All drawing and zoom functions.
- \* The **Date Align** command.
- \* The statistic groups.

The active window is designated by the word "**Active**" attached to the window title.

**Note:** *For an indicator window to receive inputs it must be designated as "Active" and its fund group window must also be active.*

**To select the active window:**

- \* Double-click on the area of the desired indicator window.

**To select the active fund group window:**

- \* Click on the area of the desired fund group window.

**Note:** *When a new indicator is displayed, it automatically becomes active.*



# CHAPTER 4

## Chapter 4. Tutorial

This chapter provides a brief tutorial on FundPro and its possible use. Remember that this tutorial is not a recommended investment strategy. It is merely intended to demonstrate the functionality of FundPro. Please review this chapter thoroughly to acquire an overview of the program.

### 4.1 Opening a Fund Group

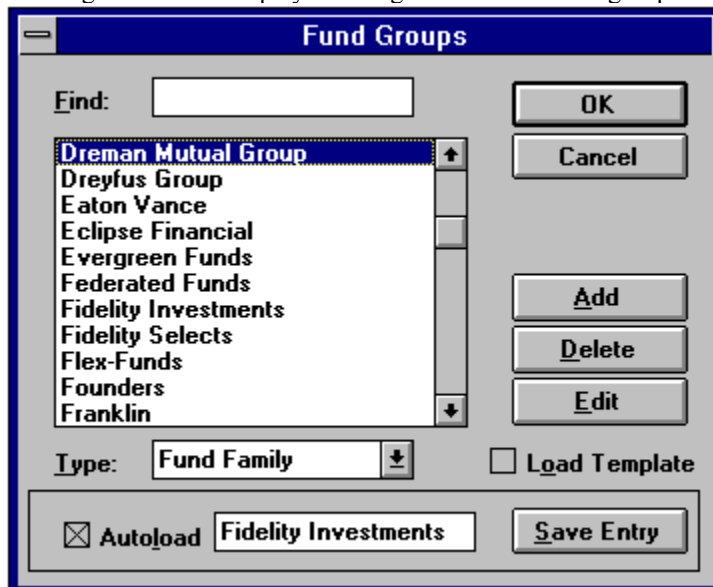
To begin our analysis of mutual funds we need to open a fund group. We will illustrate how this is done by opening the Fidelity Investments group.

To open a fund group window:

1. Choose **Fund Groups** from the Tool Bar or File menu.



A dialog box will be displayed listing the available fund groups



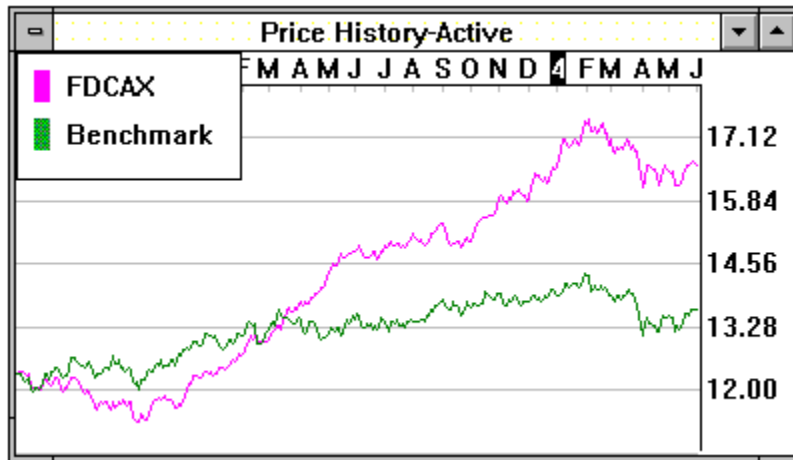
2. Highlight *Fidelity Investments* from the list.  
To aid in your search, type the first few letters of "Fidelity" in the **Find** edit box.
3. Choose **OK**.  
A window for the fund group will be created.



## 4.2 Group Window Overview

Within the fund group window, a Price History window will be created displaying the price history of the Current Fund and that of the Benchmark. Any statistics previously selected for the Price History indicator will be displayed at the bottom of the Price History window.

Once a fund group window is opened, other windows can be created within it, such as indicator windows (Relative Strength, MACD, etc.) and statistic windows (statistic groups, Latest Pricing). These windows within the fund group window are referred to as "child windows" (i.e., children of the fund group window).



The symbol of the Current Fund, FDCAX, will be displayed on the Status Bar while the name of the fund group, *Fidelity Investments*, and the Benchmark, U.S. Equity Index, will be displayed in the title bar of the fund group window.

To scroll amongst the funds in the Fidelity Investments group, choose **Previous Fund** or **Next Fund** from the Status Bar or the File menu.

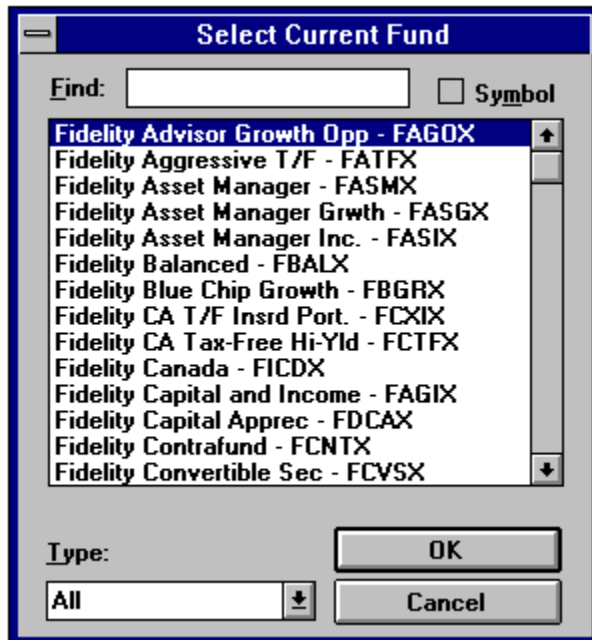


To select a specific fund from the group:

1. Choose **Select Current Fund** from the Status Bar or the File menu.



2. Highlight the fund in the dialog box which appears.



3. Choose **OK**.  
The fund selected will become the Current Fund.





## 4.3 Selecting An Indicator

FundPro contains many powerful indicators to assist in fund selection and timing. To illustrate, we will use the Relative Strength indicator to determine whether the Current Fund, FDCAX, is outperforming the Benchmark. The Relative Strength indicator, as well as all other indicators in FundPro, can be chosen from the Charts menu or from the Indicators dialog box accessible from the **Indicators** icon on the Tool Bar. For this example, make sure the current fund is FDCAX.

### 4.3.1 Editing Indicator Parameters - Main

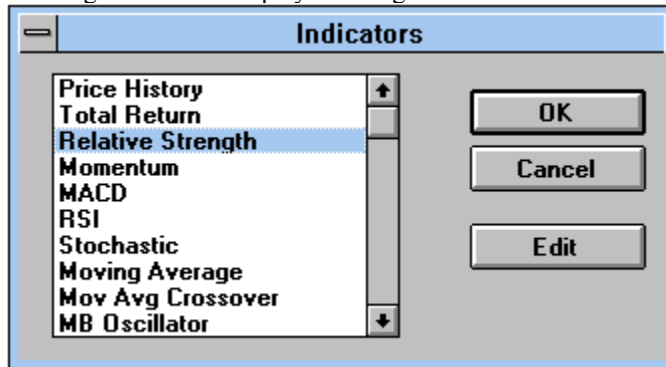
**Note:** Before selecting an indicator for the first time, it is recommended that you edit the indicator's parameters to suit your needs.

#### To edit the Relative Strength indicator:

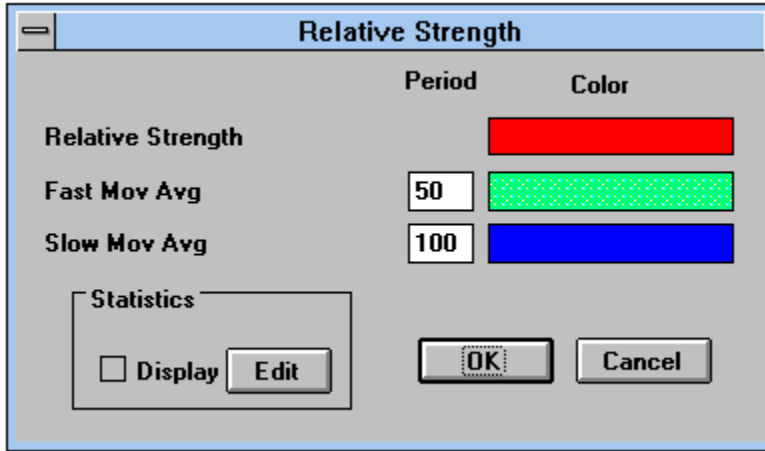
1. Choose **Indicators** from the Tool Bar or **Edit Parameters** from the Charts menu.



A dialog box will be displayed listing the indicators available.



2. Select *Relative Strength* from the list.
3. Choose **Edit**.  
A dialog box for the Relative Strength indicator will be displayed where its parameter can be defined.



From an indicator's dialog box we can select calculation periods, line colors and statistics. The Relative Strength chart displays three lines: the Relative Strength, a fast moving average of the Relative Strength, and a slow moving average of the Relative Strength.

To define the periods for the Fast Moving Average and the Slow Moving Average, enter new values in the respective Period text boxes.

As a rule, the greater the period, the greater the smoothing. Unfortunately, increasing the smoothing also increases the lag in the response time to changes in the trend. For timing indicators (indicators which generate buy/sell signals for fund timing), the greater the period, the fewer signals generated.

For the Relative Strength Indicator, set the Fast Moving Average to 50 days and set the Slow Moving Average to 200 days. Fifty days is considered by many investment professionals to approximate the medium term trend, while 200 is considered to approximate the long term trend.

**Note:** All periods are specified in market days.

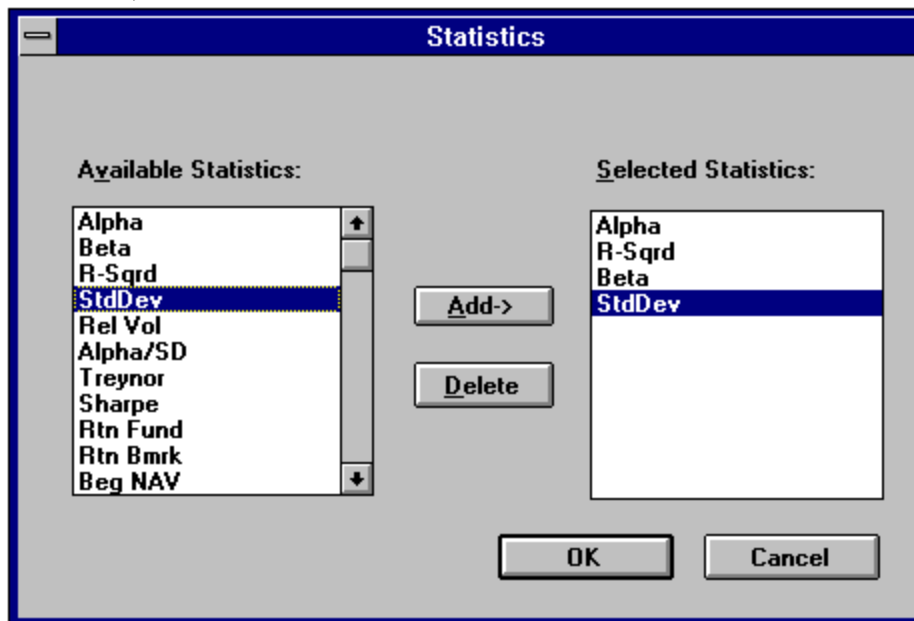


### 4.3.2 Editing Indicator Parameter - Statistics

Once we have defined the periods and colors of the Relative Strength Indicator, we will choose the statistics to be displayed on the bottom of the indicator window. All indicators windows may display statistics.

**To have statistics displayed in the Relative Strength indicator window:**

1. Check the **Display** box from the dialog box of the indicator.  
This will display the selected statistics when the indicator window is opened.
2. Select **Edit**.  
A dialog box will be displayed listing the available statistics for the Relative Strength chart. For our purposes, we want to display Alpha, Beta, R-Squared, and Standard Deviation for the Current Fund. To do so, we need to add these statistics to the **Selected Statistics** list.



**To add a statistic to the indicator window:**

1. Highlight the desired statistic from the **Available Statistics** list.
2. Select **Add**.

**To delete a statistic from the indicator window:**

1. Highlight the desired statistic from the **Selected Statistics** list.
2. Select **Delete**.



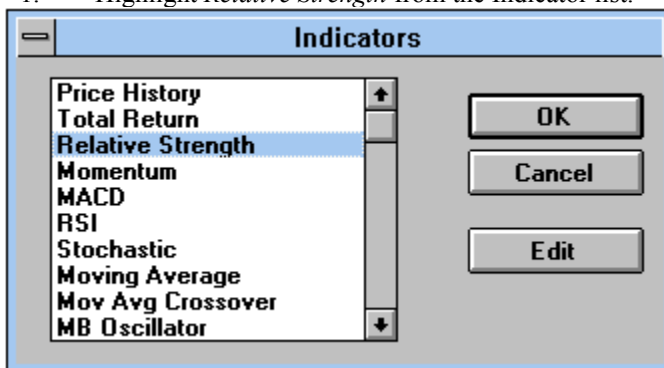
Once we have selected the statistics to be displayed, select **OK**. This will save the statistic changes and return us to the main dialog box for the Relative Strength Indicator. Having set the smoothing periods, line colors, and statistics to be displayed, we are ready to save our changes to the indicator. To do so, select **OK**. The **Indicators** dialog box will once again be displayed.

### 4.3.3 Selecting an Indicator

Now that we have configured the Relative Strength Indicator to our desired specifications, we can display it.

**To display the Relative Strength Indicator:**

1. Highlight *Relative Strength* from the Indicator list.



2. Select **OK**  
A Relative Strength window will be created within the fund group window.



## 4.4 Timing Indicators

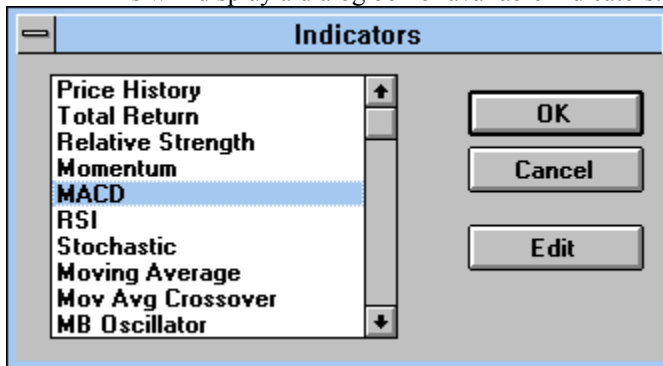
FundPro contains four indicators which are commonly used for mutual fund timing. They are Momentum, MACD, Moving Average Crossover, and Relative Strength Crossover. To develop an understanding of the use of timing indicators, we will examine a market timing strategy using the MACD Indicator.

To edit and display the MACD Indicator:

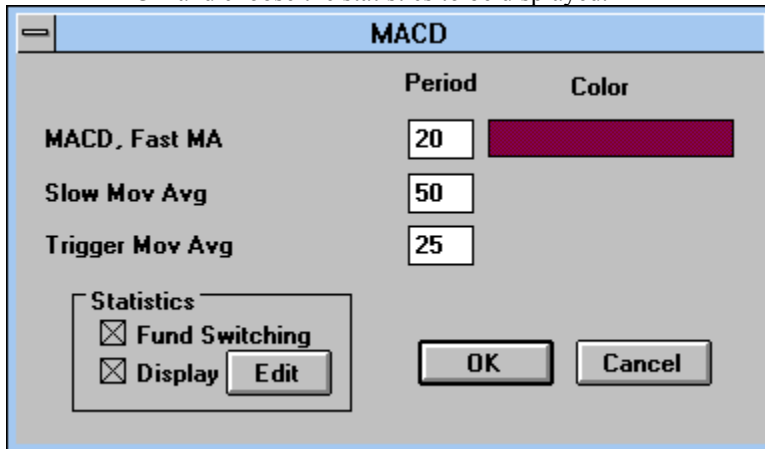
1. Click on the **Indicator** icon from the toolbar.



This will display a dialog box of available indicators.

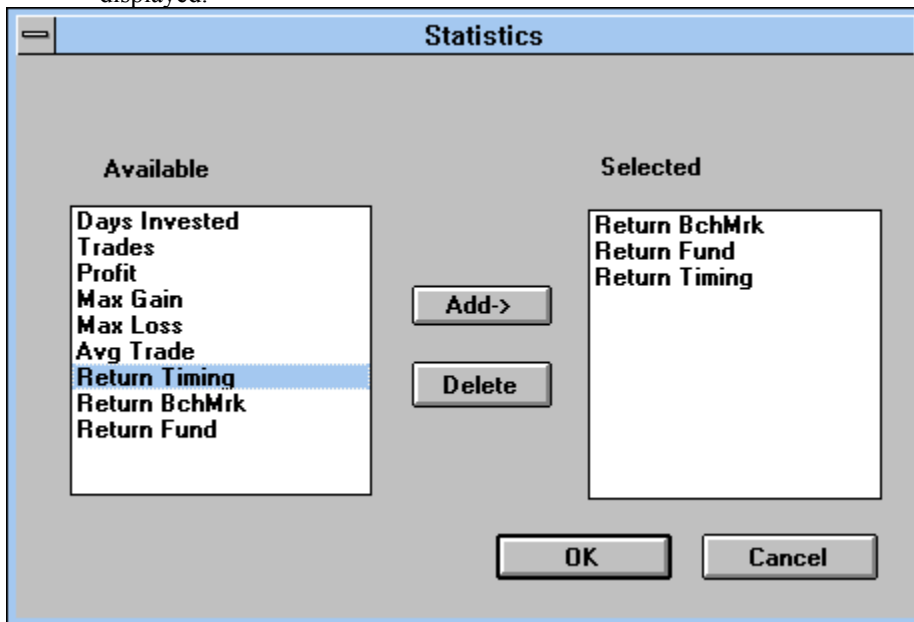


2. Highlight *MACD*.
3. Click on **Edit**.  
A dialog box will be displayed where we will set the parameters of the *MACD* and choose the statistics to be displayed.



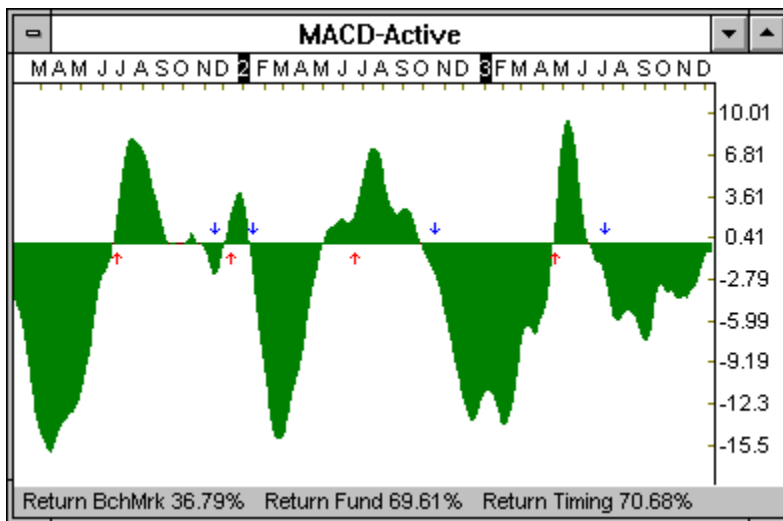


4. Enter "20" in the **Fast Mov Avg** text box.  
This will allow us to capture the short term trend.
5. Enter "50" in the **Slow Mov Avg** text box.  
This will allow us to capture the medium term trend.
6. Enter "25" in the **Trigger Mov Avg** text box.  
This will determine the trigger time period for the MACD.
7. Check **Fund Switching**.  
This will generate statistics that reflect switching between the Current Fund and the Benchmark instead of simply trading in and out of the Current Fund.
8. Check **Display**.  
This will display the selected statistics when the MACD window is opened.
9. Choose **Edit**.  
A Statistics dialog box will appear where we will select the statistics to be displayed.





10. Highlight *Return Benchmark* from the **Available Statistics** list.
11. Select **Add**.  
This will add the statistic to the list of those selected to be displayed in the indicator window.
12. Repeat the last two commands to add the following statistics: *Return Fund and Return Timing*.
13. Select **OK** in the **Statistics** dialog box.  
This will save the statistics chosen.
14. Select **OK** in the MACD dialog box.  
This will save any changes made to the parameters of the MACD.
15. Select **OK** in the Indicator selection dialog box.  
This will open the MACD window with the defined parameters.



Once the parameters have been set for an indicator, they become the new defaults for the indicator. Therefore, the next time you want to display the indicator, simply select it from the Indicators dialog box.



## 4.5 Drawing Functions

FundPro contains a wealth of drawing tools to aid in your charting analysis. To illustrate the use of the drawing functions, we will draw a trendline.

**Note:** All drawing functions are accessible as icons from the Draw Bar on the left-hand side of the program window or from the Draw menu. Drawing functions only operate on the active window.

A trendline is defined by 2 points. Rising trendlines are usually drawn between two significant lows to determine a price support level, while falling trendlines are drawn between two significant highs to determine a price resistance level. The theory behind trendlines is that a trend will continue until the trendline is violated (i.e., when the NAV crosses the trendline). When a breakout from the existing trendline occurs, a trend reversal may be imminent.

### To draw a trendline:

1. Choose Trendline from the Draw Bar.



2. Click and release the mouse at a significant point in the active window where you would like to begin the line.
3. To end the line, click and release the mouse at another significant point. The completed trendline will be drawn at the position selected.

The other drawing functions such as Pitchforks and Fibonacci Arcs are drawn in a similar manner.





## 4.6 Fund Description

In addition to examining the price history of a fund and various indicators, FundPro allows you to review background information on the Current Fund. FundPro provides a description for every fund in the database to assist in your mutual fund investing.

**Included in the fund description are:**

1. Full Fund Name
2. Fund Family
3. Symbol
4. Address
5. Phone Number
6. Date Established
7. Maximum Sales Load  
*Load requirements displayed are the maximums. Many investment companies offer lower or waive loads for larger investments. Please consult the fund's prospectus for detailed information.*
8. Objective/Policy
9. Minimum Initial/Subsequent Investment Requirements  
*The minimum investment requirements are based upon investments mailed directly to the fund company. IRA investments, money sent via wire, or other means may be subject to different requirements. Please consult the fund's prospectus for detailed information.*
10. Distribution History
  - A. X Dividend Date
  - B. Amount of Distribution
  - C. NAV on Date of Distribution
  - D. Distribution Percentage

Please be aware that the information is updated periodically and may include some commentary as well. The information provided may change without warning. Therefore, Manhattan Analytics, Inc. recommends acquiring a current prospectus before investing in any fund.



**To view a description of the Current Fund:**

- \* Choose the **Fund Info** icon from the Tool Bar.



A window will be created containing information on the Current Fund.

**Fund Description**

Fidelity Contrafund

Symbol: FCNTX

Objective: Growth

Address:

82 Devonshire St.  
Boston MA 02109

Phone: 800-544-8888

Established: 5/17/67

Min Initial/Subsequent Investment: 2500/250

Load: 3.00%

Investment Policy:

Invests primarily in common stock and securities convertible into common stock.

Distribution History:

Date	Amount	NAV	Percent
12/20/91	\$1.170	\$23.430	4.994%
2/07/92	\$0.650	\$26.350	2.467%
12/18/92	\$1.470	\$27.200	5.404%
2/05/93	\$0.280	\$28.560	0.980%
12/17/93	\$2.150	\$30.250	7.107%
2/04/94	\$0.220	\$31.110	0.707%



## 4.7 Load Individual Fund

In addition to examining the performance of the Current Fund relative to the Benchmark. FindPro allows you to directly compare one fund against another. For example, perhaps you would like to compare the performance of the Fidelity Select Computer fund, FDCPX, versus the Current Fund.

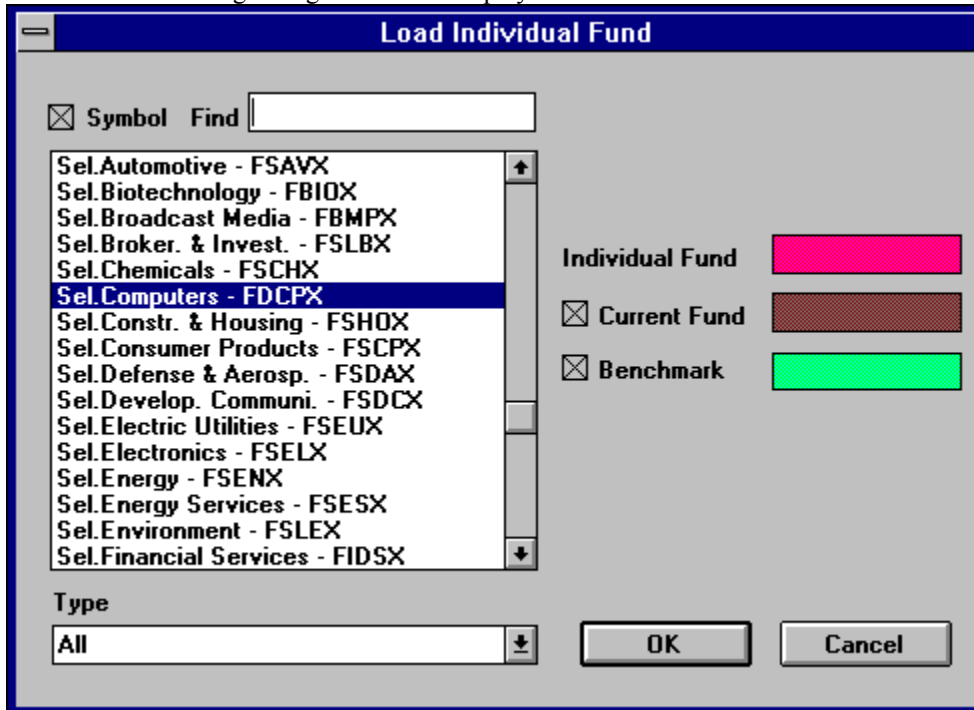
The **Load Individual Fund** command allows you to select any fund from the FundPro database and display it on the same chart with the Current Fund and the Benchmark. The NAV's of the funds are normalized to make it simple to compare the performance of the funds over a specified time period.

### To view FDCPX versus the Current Fund:

1. Select **Load Individual Fund** from the Tool Bar or from the File menu.



The following dialog box will be displayed.



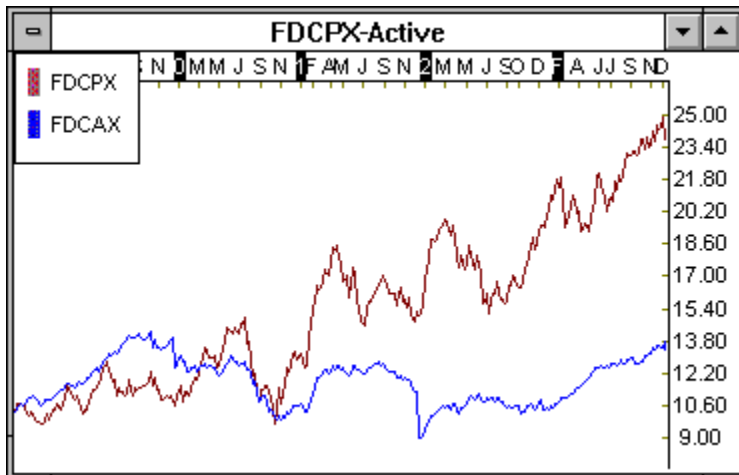


2. Select FDCPX from the list.  
To ease your search, check the **Symbol** box and type in the first few letters of the fund symbol into the **Find** box above the list.
3. Check the **Current Fund** box.  
This will select the Current Fund to be displayed in the window along with FDCPX.
4. Clear the **Benchmark** box.  
This will prevent the benchmark from being displayed.
5. Select **OK**.

A new indicator window will be created displaying FDCPX against the Current Fund.

**To easily identify the Current Fund line and the new fund line:**

- \* Select **Toggle Legend Window** from the Window menu.  
A legend will be displayed in the upper left-corner of the indicator.





## 4.8 Statistic Groups

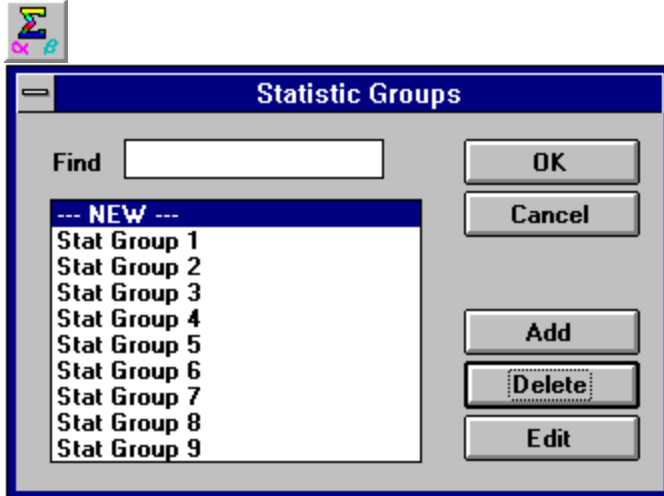
FundPro also gives you the ability to calculate statistics on all of the funds within the active fund group. Coupled with screening and ranking features, you can now easily determine the best performing funds based on your specific investment criteria using the numerous available statistics, including those used in Modern Portfolio Theory.

To calculate statistics for the funds in the group, a statistic group must be defined and selected.

*A Statistic Group is comprised of the following:*

- \* **Name** - The name of the Statistic group.
- \* **Set of statistics** - The statistics to be calculated
- \* **Period** - The length of time over which the statistics will be calculated.

FundPro comes with several pre-defined statistic groups. Like fund groups, existing statistic groups can be edited, new groups added, and old groups deleted to suit your specific needs.





### 4.8.1 Creating Statistic Groups

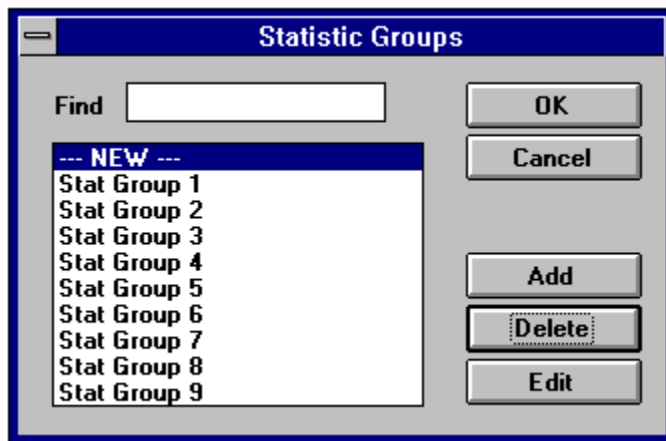
To illustrate the power of FundPro's statistics groups, we will create and display a new group.

#### To create a Statistic Group:

1. Select **Statistic Groups** from the Tool Bar or the Statistics menu.



This will open a Statistic Group dialog box.



2. Select **Add**.  
This will add a new statistic group and display a dialog box where we will define the composition of the group.

**Statistics**

Name:

Available		Selected
Alpha	↑	Alpha
Beta		Beta
R-Sqrd		StdDev
StdDev		R-Sqrd
Rel Vol		1 Mon Rtn
Alpha/SD		Rtn Fund
Treynor		Rtn Bmrk
Sharpe		6 Mon Rtn
Rtn Fund		3 Yr Rtn
Rtn Bmrk		5 Yr Rtn
Life Rtn	↓	Life Rtn

Period:  ↓



3. Enter "Custom Group" in the Name text box.  
This will name the statistic group.
4. Highlight *Alpha* from the **Available Statistics** list.
5. Choose **Add**.  
This will add Alpha to the **Selected** list of chosen statistics.
6. Repeat the last two commands to add the following statistics:  
**Beta, StdDev, R-Squared, and 1 Month Return.**
7. Select *1 Year* from the **Period** list.  
This will define 1 Year as the period over which the statistics like *Alpha* and *Beta* are calculated.
8. Select **OK**.  
This will save the new statistic group.





## 4.8.2 Statistics Window

Once the statistic group has been defined, select it from the list of groups and choose **OK**. The statistics will be calculated for each fund in the fund group and displayed in a statistics window.

Within the statistics window, there is a column for each statistic calculated. Scroll bars are provided to navigate through the list.

Symbol	Alpha	Beta	StdDev	R-Sqrd	1 Mon Rtn
CSTGX	0.000	1.550	0.065	0.748	-0.291
ALSCX	-0.000	1.735	0.092	0.704	-2.00
BEONX	0.001	1.589	0.081	0.684	-1.611
LOMCX	0.001	1.614	0.057	0.827	2.38
FCNTX	0.002	0.962	0.024	0.754	-1.520
FRSPX	0.000	1.311	0.045	0.758	-0.113
FKGRX	-0.000	0.755	0.013	0.810	-1.958
GABGX	0.000	1.014	0.023	0.820	-0.639
JHNSX	0.001	1.675	0.092	0.679	-5.32
JAVLX	-0.001	1.116	0.033	0.748	-0.863
MRQRX	0.002	1.186	0.051	0.644	-3.07
OPPTX	0.001	1.419	0.060	0.709	-0.715
PVOYX	0.000	1.574	0.060	0.792	-0.896
SCDUX	0.001	1.503	0.046	0.855	-2.33
SKSEX	0.002	0.849	0.022	0.698	1.192
SOPFX	0.001	0.862	0.018	0.793	-0.662
TWCLX	0.001	1.858	0.123	0.653	-3.18

Once the statistics are calculated, the list can be ranked (**Rank**) or screened (**Scrn**) to your specifications. This is accomplished by selecting the appropriate command in the lower left-hand corner of the statistics window.

**Note:** The **All** button refreshes the window to display the complete list if any funds have been screened out with the **Scrn** command.



### Statistics Window - Screening

To illustrate the use of the screening feature, we will assume that our investment strategy calls for investing in funds with a Beta of less than 1 and a 1 Month Return of greater than 2.5%. We will screen our list of Fidelity funds to display only those funds which meet this criteria.

#### To screen the fund group:

1. Select **Scrn** from the Statistics Window.  
A dialog box will be displayed where we will specify our screening criteria.

The screenshot shows a dialog box titled "Screen Funds". On the left is a list box with the following items: "Beta", "StdDev", "R-Sqrd", and "1 Mon Rtn". The "Beta" item is highlighted. To the right of the list box are two rows of controls. The first row is labeled "Screen:" and has a text box containing "Beta". The second row is labeled "Less Than (<)" and has a text box containing "1". The third row is labeled "Greater Than (>)" and has an empty text box. Below these controls are three buttons: "Save Entry", "OK", and "Cancel".

2. Highlight *Beta*.
3. Enter "1" in the **Less Than [ < ]** edit box.
4. Select **Save Entry**.  
This is required to save each individual entry.
5. Highlight *1 Month Return*.
6. Enter "2.5" in the **Greater Than [ > ]** edit box.
7. Select **Save Entry**.
8. Choose **OK**.  
The list will be screened to display with only those funds that meet our specifications.



### Statistics Window -Ranking

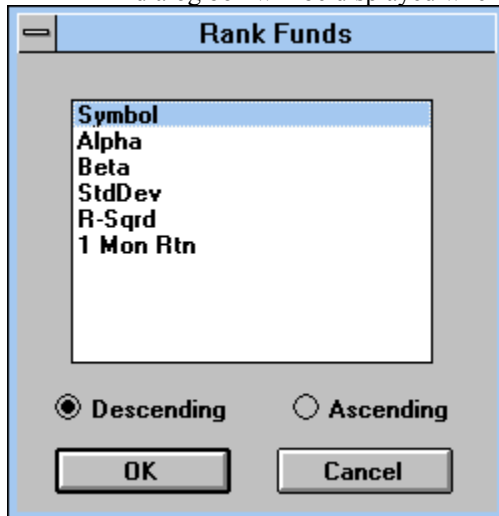
FundPro makes it easy to rank the funds on any statistic within the group. For example, after screening on Beta and 1 Month Return, you may want to know which of the remaining funds have the greatest 1 Month Return.

Determining this is easy with the **Rank** feature available from the statistics window. Any of the columns from the statistics window can be used to rank the fund list in either ascending or descending order.

#### To rank the fund list:

1. Select **Rank** from the statistics window.

A dialog box will be displayed where we will make our selection.



2. Highlight *1 Mnth Return*.  
This will determine the statistic on which to rank the funds.
3. Select **Descending**.  
This will determine the order of ranking (Greatest to Least).
4. Click on **OK**.  
The list will now be ranked accordingly.

With the funds sorted according to 1 Month Return, we can now easily determine the top performers for the last month.



## 4.9 Windowing Commands

FundPro harnesses the full power of Windows by allowing you to display multiple windows simultaneously. As a result, all of the opened windows within the active fund group can be moved and sized to your specifications.

To illustrate this feature we will tile the open child windows.

**To tile the child windows within the active fund group:**

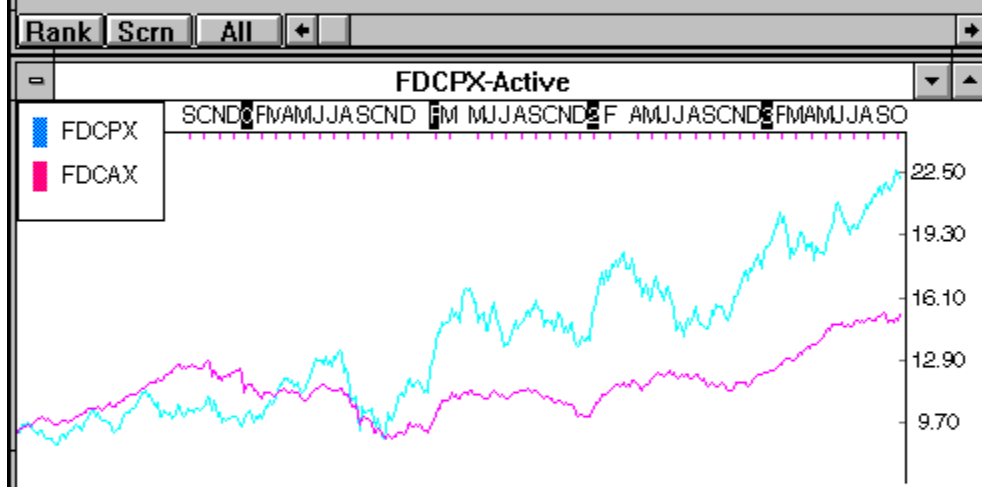
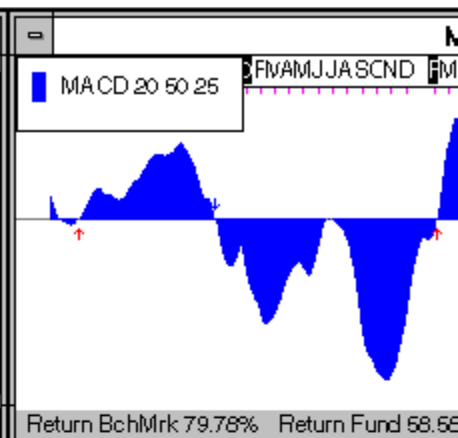
- \* Select **Tile Child Windows** from the Tool Bar or Window menu.



The child windows will be redrawn to fill the available area of the active fund group. You can use the **Previous** and **Next** fund commands to scroll amongst the funds in the active fund group. All open child windows will be updated to display the Current Fund.

**Custom Group (10/12/92 - 10/12/93)**

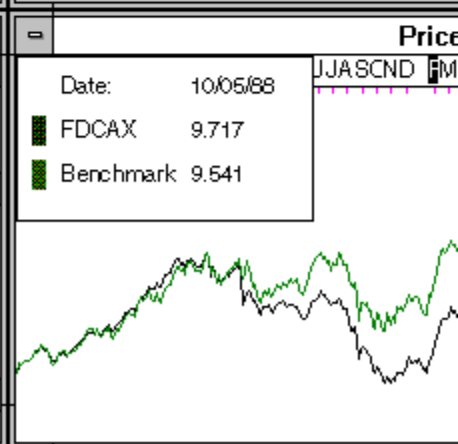
Symbol	Alpha	Beta	StdDev	R-Sqrd
FDPMX	16.285	-4.677	1.135	-0.688
FSAGX	11.971	-3.159	0.825	-0.545
FSESX	8.709	-2.903	0.699	-0.544
FEMKX	3.502	-0.338	0.017	-0.411
FSEAX	1.909	-0.700	0.026	-0.683
FSDAX	4.361	0.520	0.241	0.166
FLATX	1.592	-0.011	0.076	-0.006
FBGFX	1.959	0.678	0.084	0.367
FPBFX	8.534	-2.188	0.203	-0.760



**Fund Description**

Distribution History:

Date	Amount	NAV	Percent
12/06/91	\$ 2.750	\$11.770	23.364%
12/11/92	\$ 0.780	\$13.400	5.821%
2/05/93	\$ 0.040	\$14.190	0.282%
12/10/93	\$ 1.120	\$16.720	6.699%
2/04/94	\$ 0.390	\$17.240	2.262%





**To save the open child windows as a template:**

\* Select **Save Template** from the File Menu.

The open child windows will be saved in their current positions. You can load the template when opening a fund group by selecting **Load Template** in Fund Groups dialog box.



**Note:** *There can be only one template saved at a time.*



## 4.10 FundPro Downloader - not included for use in demo

**If you do not subscribe to FundPro's Modem Retrieval Service, skip this section.**

In this selection, we will run through the process of updating your data with the FundPro Downloader.

The FundPro Downloader makes it easy to keep your database current. Whether you call every day, once a week, or once a month, the FundPro Downloader will update your database with data for all of the days you may have missed. Furthermore, all mutual fund data is automatically adjusted for distributions, thus eliminating a common problem related to other data sources.

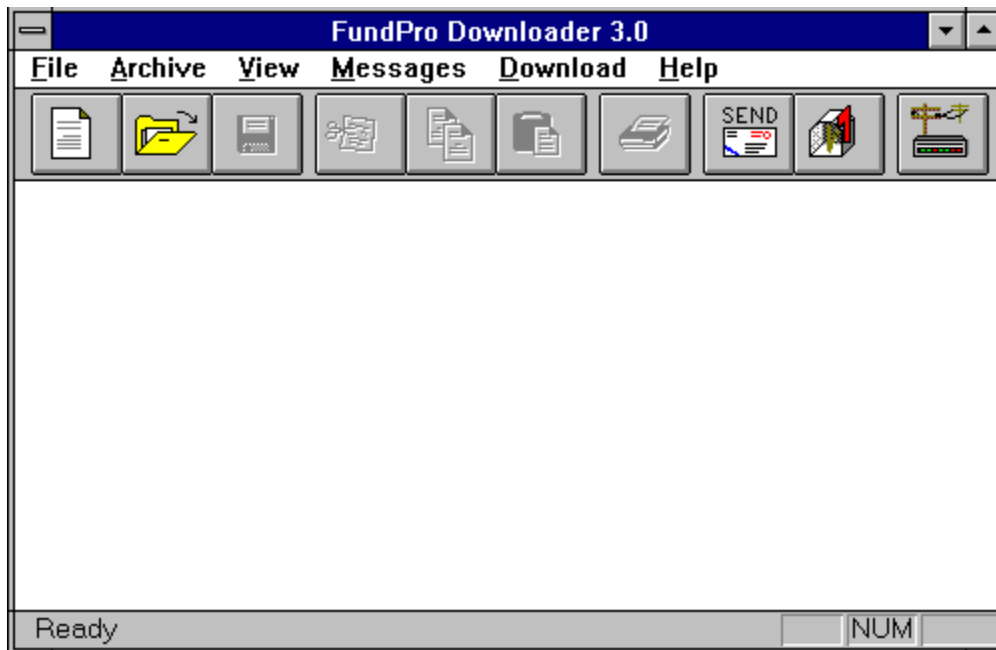
### To start the FundPro Downloader:

- \* Select **FundPro Downloader** from the Tool Bar.



This will call the FundPro Downloader.

The FundPro Downloader is a separate program used to download the latest data from the Manhattan Analytics, Inc. main database.





## 4.11 Latest Pricing

**Note:** *Once the mutual fund database has been updated, any open fund group windows must be closed and then re-opened before the newly downloaded data will be reflected in the analysis. This is necessary to load the new data into memory.*

After the Fidelity Investments group has been closed and re-opened to account for the new data, we may display the latest prices for the funds in the group.

### **To open a statistic window with the latest NAV's:**

- \* Click on the **Latest Pricing** icon from the Tool Bar.



A statistics window will be created listing closing statistics for the funds in the active fund group.





Symbol	Close	Last	Change	% Change
FDCAX	16.740	16.720	0.020	0.120
FOCPX	23.630	23.500	0.130	0.553
FBGRX	23.870	23.620	0.250	1.058
FCNTX	30.400	32.390	-1.990	-6.144
FDEGX	17.890	17.870	0.020	0.112
FDGRX	28.610	31.390	-2.780	-8.856
FMAGX	70.070	69.360	0.710	1.024
FDFFX	17.840	19.590	-1.750	-8.933
FDSSX	18.500	18.410	0.090	0.489
FTRNX	57.820	62.660	-4.840	-7.724
FDVLX	39.770	39.520	0.250	0.633
FFIDX	19.060	18.930	0.130	0.687
FGRIX	22.060	21.890	0.170	0.777
FCVSX	16.360	16.380	-0.020	-0.122
FEQIX	33.700	33.290	0.410	1.232

Rank | Scrn | All | + | →

**Note:** *Close* is the last price available from the database. *Last* is the previous price. *Change* is the difference between *Close* and *Last*, while *% Change* is the percent difference from *Last* to *Close*.

As with other statistic windows, the Latest Pricing window can be screened and ranked. Thus, it is easy to determine which funds are up for the day and which were the greatest percentage gainers.

## 4.12 Conclusion

The presentation of the main features of FundPro is now complete. After completing this section you should be able to navigate through FundPro. The remaining sections of the manual present expanded and in-depth analysis of each program feature. We encourage you to experiment with the program and consult the manual or the on-line Help to get the most out of FundPro. Best of luck in your mutual fund analysis!

## FUNDPRO funds as of 6-15-94

**Reminder:** Manhattan Analytics has the ability to add additional funds to the database. Please contact Manhattan Analytics at 1-800-251-FUND(3863) to request specific funds.

AAL Cap. Growth  
AARP Cap. Growth  
AIM Constellation  
AIM Weingarten  
Alger Small Cap.  
Alliance S/T Multi Mrkt  
Alliance Wrld Inc. Trst  
American AMCAP  
American Balanced  
American Bond Fund of Amer.  
American Capital Govt. Sec.  
American Capital World Bond  
American EuroPacific Growth  
American Fundmntal Invstrs  
American Grwth Fnd of Amer.  
American Heritage Fund  
American Hi Inc. Trust  
American Inc. Fnd of Amer.  
American Invst Co.of Amer.  
American Mutual  
American New Economy  
American New Perspective  
American U.S. Govt Sec.  
JPN INDEX  
XMI 20 STKS  
XOI INDEX  
400 STOCKS INDX  
Analytic Optioned Equity  
ASM Fund  
Babson Bond Trust - Port. L  
Babson Enterprise II  
Babson Growth  
Babson Shadow Stock  
Babson Value  
Babson-Stewart Ivry Intrntl  
Baron Asset Fund  
Bartlett Cap. Basic Value  
Bartlett Cap. Val. Intrntl.  
Benham Adj. Rate Govt Sec.  
Benham CA Muni. Hi-Yld  
Benham CA Tax-Free Int-Trm  
Benham CA Tax-Free L-Trm  
Benham CA Tax-Free Shrt-Trm  
Benham Capital Preservation  
Benham Cap. Utilities Inc.  
Benham Equity Growth Fund  
Benham European Govt Bond

Benham GNMA Income  
Benham Gold Equities Index  
Benham Income and Growth  
Benham National T/F Int.-Trm  
Benham Natl T/F Long-Term  
Benham Trgt Maturities 1995  
Benham Trgt Maturities 2000  
Benham Trgt Maturities 2005  
Benham Trgt Maturities 2010  
Benham Trgt Maturities 2015  
Benham Trgt Maturities 2020  
Benham Treasury Note  
Berger 100  
Berger 101  
Bernstein Sanford C. Fund  
AMEX 15 STOCKS  
Blanchard Flexible Income  
Blanchard Global Growth  
Blanchard Shrt-Trm Glbl Inc.  
Brinson Global Fund  
Bull & Bear Gold Investors  
Bull & Bear Municipal Inc.  
Bull & Bear Spec. Eqties  
Bull & Bear U.S. & Overseas  
Bull & Bear U.S. Government  
Calamos Convertible  
California Tax-Free Inc.  
California U.S. Govt Sec.  
Calvrt Soc.Invst.Mngd Grwth  
Century Shares Trust  
CGM Capital Development  
Clipper Fund  
Cohen & Steers Realty Shars.  
Columbia Fixed-Inc. Sec.  
Columbia Growth  
Columbia Municipal Bond  
Columbia Special  
Dodge & Cox Balanced  
Dodge & Cox Income  
Dodge & Cox Stock  
DJ 15 UTILITIES  
DJ 30 INDUSTRIALS  
DJ 65 STK COMPOSITE  
DJ 20 TRANSPORTS  
Dreman Contrarian Port.  
Dreman High-Return Port.  
Dreyfus A. Bonds Plus  
Dreyfus Appreciation  
Dreyfus Balanced  
Dreyfus CA Int. Muni Bond  
Dreyfus CA Tax-Exempt Bond  
Dreyfus Capital Value  
Dreyfus Conn Inter Muni Bnd  
Dreyfus FL Int. Muni Bond  
Dreyfus Fund  
Dreyfus General CA Muni Bnd

Dreyfus General Muni Bond  
Dreyfus General NY Muni Bnd  
Dreyfus GNMA  
Dreyfus Growth and Income  
Dreyfus Growth Opportunity  
Dreyfus Insured Muni Bond  
Dreyfus Inter. Muni Bond  
Dreyfus Int. Eq.  
Dreyfus MA Int. Municipal  
Dreyfus MA Tax-Exempt Bond  
Dreyfus Municipal Bond  
Dreyfus NJ Inter. Muni  
Dreyfus NJ Municipal Bond  
Dreyfus NY Insured T/E Bond  
Dreyfus NY Tax-Exempt Bond  
Dreyfus NY T/E Int. Bond  
Dreyfus People's Index  
Dreyfus Premier CT T/E Bond  
Dreyfus Short Term Income  
Dreyfus Shrt-Inter. Govt  
Dreyfus Shrt-Inter. T/E Bnd  
Dreyfus Third Century  
Eclipse Equity Fund  
Evergreen Amer. Retirement  
Evergreen Foundation Fund  
Evergreen Fund  
Evergreen Insured Nat. T/F  
Evergreen Limited Market  
Evergreen Real Estate Eqty  
Evergreen Shrt/Int Muni Bnd  
Evergreen Shrt/Int Muni. CA  
Evergreen Total Return  
Evergreen Value Timing  
Federated ARMs Instit. Shrs  
Federated Bond Fund  
Federated GNMA Instit. Shrs.  
Federated Growth Trust  
Federated High-Yield Trust  
Federated Inc. Trust Instit.  
Federated Int.Gvt Inst.Shrs  
Federated Inter Muni Trust  
Federated Intrntnl Equity  
Federated Max Cap  
Federated Mini-Cap Fund  
Federated S/I Gvt-Inst.Shrs  
Federated Shrt-Int.MuniTrst  
Federated Shrt-Trm Inc.Inst  
Federated Stock & Bond  
Federated Stock Trust  
Fidelity Aggressive T/F  
Fidelity Asset Manager  
Fidelity Asset Manager Grwth  
Fidelity Asset Manager Inc.  
Fidelity Balanced  
Fidelity Blue Chip Growth  
Fidelity CA Tax-Free Hi-Yld

Fidelity CA T/F Insr Port.  
Fidelity Canada  
Fidelity Capital and Income  
Fidelity Capital Apprec  
Fidelity Contrafund  
Fidelity Convertible Sec  
Fidelity Destiny I  
Fidelity Destiny II  
Fidelity Disciplined Equity  
Fidelity Dvrsfd Intrntl  
Fidelity Emerging Markets  
Fidelity Equity- Income II  
Fidelity Equity-Income  
Fidelity Europe  
Fidelity Fund  
Fidelity Ginnie Mae  
Fidelity Global Balanced  
Fidelity Global Bond  
Fidelity Government Sec.  
Fidelity Growth & Income  
Fidelity Growth Company  
Fidelity High-Yield T/F  
Fidelity Intermediate Bond  
Fidelity Intl. Grwth & Inc.  
Fidelity Investment Grd Bnd  
Fidelity Japan  
Fidelity Latin America  
Fidelity Limited-Trm Muni  
Fidelity Low-Priced Stock  
Fidelity MA Tax-free Hi-Yld  
Fidelity Magellan  
Fidelity Market Index  
Fidelity MI Tax-Free Hi-Yld  
Fidelity MN T/Free Port  
Fidelity Mortgage Sec.  
Fidelity Municipal Bond  
Fidelity New Millenium  
Fidelity NY T/F Insured  
Fidelity NY Tax-Free Hi-Yld  
Fidelity OH tax-Free Hi-Yld  
Fidelity OTC  
Fidelity Overseas  
Fidelity Pacific Basin  
Fidelity Puritan  
Fidelity RI. Estate Invstmnt  
Fidelity Retirement Growth  
Fidelity Select Air Trans  
Fidelity Select Amer. Gold  
Fidelity Select Automotive  
Fidelity Select Biotech  
Fidelity Slet Brdst & Media  
Fidelity Select Brkr.&Invst.  
Fidelity Select Chemicals  
Fidelity Select Computers  
Fidelity Slet Cnstrct/Housng  
Fidelity Select Cnsmr Prod.

Fidelity Select Dfns & Aero.  
Fidelity Select Dvlp. Comm.  
Fidelity Slct Elec Utilit.  
Fidelity Select Electronics  
Fidelity Select Energy  
Fidelity Select Enrgy Serv.  
Fidelity Select Environ Svcs.  
Fidelity Select Finan. Serv.  
Fidelity Slct Food & Agri.  
Fidelity Select Health Care  
Fidelity Slct Home Finance  
Fidelity Select Indst Equip.  
Fidelity Select Indst. Mats  
Fidelity Select Insurance  
Fidelity Select Leisure  
Fidelity Select Med Delivry  
Fidelity Select Money Mrkt  
Fidelity Select Natural Gas  
Fidelity Slct Paper & Forest Prod  
Fidelity Slct Prec. Mtls/Min.  
Fidelity Select Region Bnks  
Fidelity Select Retailing  
Fidelity Slct Sftwr&Cmp Srv.  
Fidelity Select Technology  
Fidelity Select Telecomm.  
Fidelity Select Trans  
Fidelity Select Utilities  
Fidelity Short-Term Bond  
Fidelity Shrt-Trm World Inc  
Fidelity Southeast Asia  
Fidelity SprtnCA Muni Hi-Yld  
Fidelity SprtnCT Muni Hi-Yld  
Fidelity Sprtn FL Muni Inc.  
Fidelity Spartan GNMA  
Fidelity Spartan Govt Inc.  
Fidelity Spartan High Inc.  
Fidelity SprtnInvst.Grad.Bnd  
Fidelity Spartan Long-Term  
Fidelity Sprtn Ltd.Mat.Gvt  
Fidelity Spartan Money Mrkt  
Fidelity Spartan Muni Inc.  
Fidelity SprtnNJ Muni Hi-Yld  
Fidelity SprtnNY Muni Hi-Yld  
Fidelity SprtnPA Muni Hi-Yld  
Fidelity Spartan S/T Bond  
Fidelity Sprtn Shrt-Int Gvt  
Fidelity Spartan S/I Muni  
Fidelity Stock Selector  
Fidelity T/F Insured  
Fidelity Trend  
Fidelity U.S. Equity Index  
Fidelity U.S. Govt Reserves  
Fidelity Utilities Inc.  
Fidelity value  
Fidelity Worldwide  
Flex-Funds Growth

Founders Blue Chip  
Founders Discovery  
Founders Frontier  
Founders Govt Sec.  
Founders Growth  
Founders Special  
Founders Worldwide Growth  
Franklin Adj. Rate Sec.  
Franklin Adj U.S. Govt  
Franklin AGE High-Income  
Franklin AZ Tax-Free Inc.  
Franklin CA Insured T/F Inc.  
Franklin CA Tax-Free Inc.  
Franklin Convertible Sec.  
Franklin DynaTech  
Franklin Equity  
Franklin Equity-Income  
Franklin Federal T/F Inc.  
Franklin FL Tax-Free Income  
Franklin GA Tax-Free Inc.  
Franklin Global Opp. Inc.  
Franklin Gold  
Franklin Growth  
Franklin Hi-Yld T/F Inc.  
Franklin Income  
Franklin Indiana Tax-free  
Franklin Insured T/F Inc.  
Franklin Invstmnt-Grd Inc.  
Franklin MA Insured T/F Inc.  
Franklin MD T/F Income  
Franklin MI Insured T/F Inc.  
Franklin MN Insured T/F Inc.  
Franklin MO Tax-Free Inc.  
Franklin NC Tax-Free Inc.  
Franklin NJ Tax-Free Inc.  
Franklin NY Tax-Free Inc.  
Franklin OH Insured T/F Inc.  
Franklin OR Tax-Free Inc.  
Franklin PA Tax-Free Inc.  
Franklin Premier Return  
Franklin Puerto Rico T/F Inc.  
Franklin Rising Dividends  
Franklin S/I U.S. Govt.  
Franklin U.S. Govt Sec.  
Franklin Utilities  
Franklin VA Tax-Free Inc.  
Fremont CA Intermediate T/F  
Fremont Global Fund  
FundTrust Aggress Grwth  
FundTrust Growth  
FundTrust Growth & Inc.  
FundTrust Income  
G.T. America Growth  
G.T. Europe Growth  
G.T. Global Dollar  
G.T. Global Gov. Inc.

G.T. Global Growth & Inc.  
G.T. Global Health Care  
G.T. Gbl.Strat.Inc.Cls A  
G.T. International Growth  
G.T. Japan Growth  
G.T. Latin America Growth  
G.T. New Pacific Growth  
G.T. Telecommunications  
Gabelli Asset  
Gabelli Equity Income  
Gabelli Growth  
Gabelli Small-Cap Growth  
Gateway Growth Plus  
Gateway Index Plus  
George Putnam Fund of Bstn  
Gintel ERISA  
Gintel Fund  
GIT Equity Special Growth  
Gradison-McDonald Estab Val.  
Gradison-McDonald Opp. Val.  
Hancock Svrgn Invstmnts  
Harbor Bond  
Harbor Cap. Apprec.  
Harbor Growth  
Harbor International  
Harbor Value  
Hntngtn Intl.Crnicy Port.Glbl  
Hntngtn Intl.Crnicy Port.Hard  
Hntngtn Intl. Crncy Hi-Inc.  
IAI Balanced  
IAI Bond  
IAI Growth and Income  
IAI International  
IAI Regional  
IAI Reserve Fund  
IAI Value  
IDS Bond  
IDS Discovery  
IDS Divers. Equity-Inc.  
IDS Extra Income  
IDS Federal Income  
IDS Mutual  
IDS New Dimensions  
IDS Selective  
IDS Stock  
IDS Utilities Income  
INVESCO Bond Hi-Yld  
INVESCO Bond U.S. Govt  
INVESCO Dynamics  
INVESCO Emerging Growth  
INVESCO European Fund  
INVESCO Industrial  
INVESCO Industrial Income  
INVESCO Money Mrkt-T/F Money  
INVESCO Pacific Basin  
INVESCO Select Income



INVESCO Series Trst Equity  
INVESCO Series Trst Flex  
INVESCO Trst Int. Govt Bond  
INVESCO Trst Intrntnl Grwth  
INVESCO Strat Energy  
INVESCO Strat. Environ. Serv.  
INVESCO Strat Finan Svcs.  
INVESCO Strategic Gold  
INVESCO Strat Hlth Sci  
INVESCO Strategic Leisure  
INVESCO Strat Tech  
INVESCO Strat Utilities  
INVESCO T/F Inc. Shares  
Ivy Growth  
Ivy Growth & Income  
Ivy International  
Janus Balanced  
Janus Enterprise  
Janus Flexible Income  
Janus Fund  
Janus Growth & Income  
Janus Inter. Govt Sec.  
Janus Short-Term Bond  
Janus Twenty  
Janus Venture  
Janus Worldwide Fund  
Kaufmann Fund  
Kemper Growth  
Kemper High Yield  
Kemper Technology  
Kemper Total Return  
Lexington Convert. Sec.  
Lexington Corp. Leaders  
Lexington GNMA Inc.  
Lexington Gold  
Lexington Growth & Inc.  
Lexington Strat. Invstmnts  
Lxingt Wrlwd. Emrgng Mrkts  
LMH Fund  
LONDON FT SE 100  
Loomis Sayles Bond  
Loomis Sayles Growth  
Loomis Sayles Intrntnl Eqty  
Loomis Sayles Small Cap.  
Lord Abbett - Affil.  
Lord Abbett U.S. Govt  
MAS Pooled Trst-Intl Eqty  
MAS Pooled Trst-Ltd Durtn  
MAS Pooled Trust-Small Cap.  
MAS Pooled Trust-Value Port.  
MAS Pooled Trst-Eqty  
MAS Pooled Trust-Fixed Inc.  
Mathers  
Merger  
Meridian  
Merrill Lynch Growth

Merrill Lynch Pac.  
Merrill Lynch World Inc.  
Merriman Asset Alloc.  
Merriman Blue Chip  
Merriman Cap. Apprec.  
Merriman Government  
MFS Research  
MIM Stock Apprec.  
Montgomery Emrgng Mrkts  
Montgomery Global Comm.  
Montgomery Small-Cap Fund  
NASDAQ BANKING STOCKS  
NASDAQ COMPOSITE INDEX  
NASDAQ INDUSTRIALS  
NASDAQ INSURANCE STKS  
NASDAQ 100 INDX  
NASDAQ TRANSPORTATIONS  
Neuberger & Berman Genesis  
N/B Guardian  
N/B Ltd. Maturity Bond  
N/B Manhattan  
N/B Municipal Sec. Trst  
N/B Partners  
N/B Selected Sectors  
N/B Ultra Shrt Bond  
New USA Fund  
NYSE COMPOSITE  
NYSE FINANCE  
NYSE INDUSTRIALS  
NYSE TRANSPORT  
Northeast Invstrs Growth  
Northeast Invstrs Trst  
NYSE UTILITY INDEX  
Oberweis Emerging Growth  
Olympic Equity-Inc.  
Oppenheimer Equity Inc.  
Oppenheimer Hi Yld  
Oppenheimer Strat Inc.  
Oppenheimer Time  
Oppenheimer Total Rtrn  
Pacific Hor. Aggress Grwth  
Pacific Horizon CA T/E Bond  
Pacific Hor U.S. Govt Sec.  
Papp L. Roy Stock  
Pasadena Growth  
Pax World  
Permanent Portfolio  
Permanent Port. T-Bill  
Permanent Vrsatile Bnd Port.  
Perritt Capital Growth  
PFAMCO Cap. Apprec. Port.  
PFAMCO Diversified Low P/E  
PFAMCO Equity Income Port.  
Phoenix Balanced  
Phoenix Growth Fund  
PIMCO Foreign

PIMCO Growth Stock  
PIMCO Lng-Trm U.S. Govt  
PIMCO Low Duration  
PIMCO Short-Term Fund  
PIMCO Total Return  
PIMCO Total Return III  
Pioneer Bond  
Pioneer Capital Growth  
Pioneer Equity-Income  
Pioneer Europe Fund  
Pioneer Fund  
Pioneer Gold Shares  
Pioneer II  
Pioneer Municipal Bond  
Pioneer Three  
PRA Real Estate Sec.  
Primary Trend  
Putnam Voyager  
Reich & Tang Equity  
Reynolds Blue Chip Growth  
Robertson Stpns Emrg Grwth  
Robertson Stpns Value Plus  
Royce Fund Eqty Inc. Series  
Rushmore American Gas Index  
Rushmore O-T-C Index Plus  
Rushmore Prec.Mtls Indx Plus  
Rushmore StckMrkt Indx Plus  
Rushmore U.S. Gvt. Int-Trm  
Rushmore U.S. Govt. L-Trm  
Rushmore Virginia T/F Port  
S&P INSURANCE INDEX  
S&P RETAIL SECTOR  
S&P TRANS SECTOR  
SAFECO California T/F Inc.  
SAFECO Equity  
SAFECO Growth  
SAFECO High-Yield Bond  
SAFECO Income  
SAFECO Municipal Bond  
SAFECO Northwest Fund  
SAFECO U.S. Govt Sec  
Salomon Brothers Invstrs  
Salomon Brothers Opp.  
Schwab 1000 Fund  
Schwab CA Shrt-Int T/F Bnd  
Schwab CA T/F Bond  
Schwab Money Market  
Schwab National T/F Bnd  
Schwab Short Inter T/F Bnd  
Schwab U.S. Govt Bond (S/I)  
Scudder California Tax-Free  
Scudder Capital Growth  
Scudder Development  
Scudder General  
Scudder GNMA  
Scudder Gold

Scudder Growth & Inc.  
Scudder Income  
Scudder International  
Scudder International Bond  
Scudder Japan  
Scudder Latin Amer.  
Scudder Managed Muni Bonds  
Scudder Med-Trm T/F  
Scudder New York Tax-Free  
Scudder Quality Growth  
Scudder Short-Term Bond  
Scudder Shrt-Trm Global Inc.  
Scudder U.S. Treasury  
Scudder Zero-Coupon 2000  
SEI Bond Index Port  
SEI Capital Apprec.  
SEI Instit. Mngd Bond Cls A  
SEI Instit.Ltd.Vtility Bnd  
SEI Mngd Trst Eqty-Inc.  
SEI Mngd Trst Val. Port.  
SEI S&P 500 Index  
SEI T/E Trst Int.-Trm Muni  
SEI-International  
Selected American Shares  
Selected Special Shares  
Seligman Growth  
Seligman Income  
Sentinel Common Stock  
Short Term Municipal  
Sit Nw Bgning Growth  
Sit New Bgning Inc.&Grwth  
Sit New Beginning T/F Inc.  
Sit Nw Bgning U.S.Gvt Sec.  
Skyline Special Equities  
SoGen International Fund  
Sound Shore  
Southeastern Ast Mgmt.Sml-Cp  
Southeastern Asset Mgmt.Val  
S&P 100 INDEX  
S&P 20 TRANSP  
S&P 40 UTILITIES  
S&P 400 INDUSTRIALS  
S&P 500 STOCKS  
S&P BANK COMPOSITE  
S&P CHEMICALS  
S&P HLTH CARE COMP  
SteinRoe Capital Opp.  
SteinRoe Government Income  
SteinRoe High-Yield Muni.  
SteinRoe Income Fund  
SteinRoe Intermediate Bond  
SteinRoe Intermediate Muni.  
SteinRoe Managed Muni.  
SteinRoe Prime Equities  
SteinRoe Special Fund  
SteinRoe Stock Fund

SteinRoe Total Return  
Stratton Growth  
Stratton Monthly Dvdnds  
Strong Advantage  
Strong Discovery  
Strong Income  
Strong Insured Muni Bond  
Strong International Stock  
Strong Investment  
Strong Municipal Bond  
Strong Opportunity  
Strong Short-Term Bond  
Strong Total Return  
T. Rowe Prc Adj.Rate U.S.Govt  
T. Rowe Price Cap. Apprec.  
T. Rowe Price Eqty-Inc.  
T. Rowe Price Euro Stck  
T. Rowe Price Glbl Gvt Bnd  
T. Rowe Price GNMA  
T. Rowe Price Grwth & Inc.  
T. Rowe Price Growth Stock  
T. Rowe Price High-Yield  
T. Rowe Price Intrntnl Bond  
T. Rowe Price Intrntnl Stck  
T. Rowe Price MD T/F Bond  
T. Rowe Price Nw Amer.Grwth  
T. Rowe Price New Asia  
T. Rowe Price New Horizons  
T. Rowe Price New Income  
T. Rowe Price Sci & Tech.  
T. Rowe Price Shrt-Trm Bond  
T. Rowe Price Small-Cap Val.  
T. Rowe Price Spectrum Grwth  
T. Rowe Price Spectrum Inc.  
T. Rowe Price Tax-Free Inc.  
T. Rowe Price T/F Shrt-Int  
T. Rowe Tax-Free High-Yield  
Templeton Develop.Mrks Trst  
Templeton Foreign  
Templeton Global Opportunity  
Templeton Growth  
Templeton Income  
Templeton Real Estate Sec  
Templeton Smaller Cos. Grwth  
Templeton World  
Twentieth Cent.Blncd Invstrs  
Twentieth Cent.Grwth Invstrs  
Twentieth Cent.Heritg Invstr  
Twentieth Cent.Slct Invstrs  
Twentieth Cent.Ultr Invstrs  
Twentieth Cent.Vist Invstrs  
United Serv. All Amer. Eqty  
United Services Euro.Equity  
United Serv. Glbl Resources  
United Services Gold Shares  
United Services Growth

United Services Income  
United Services Real Estate  
United Services Tax-Free  
United Services World Gold  
USAA Investment Balanced  
USAA Investment Cornerstone  
USAA Mutual Income  
USAA Mutual Income Stock  
Value Line  
Value Line Aggress.Inc.Trust  
VALUE LINE ARITHMETIC WGHT  
Value Line Convertible  
Value Line Income  
Value Lin Lvgd Grwth Invstrs  
Value Line Special Situatns  
Value Line T/F Hi-Yld  
Value Line U.S. Govt Sec.  
Vanguard 500 Fund  
Vanguard Asset Allocation  
Vanguard CA Insured L-Trm  
Vanguard CA T/F Mny Mrkt  
Vanguard Convertible Sec.  
Vanguard Equity-Income  
Vanguard Explorer  
Vanguard Int. U.S. Treasury  
Vanguard S/T U.S. Treasury  
Vangrd Fxd-Inc. Hi-Yld Corp.  
Vangrd Fxd-In.Invst.Grd Corp  
Vangrd Fxd-Inc.L-T U.S.Treas.  
Vanguard Short-Term Corp  
Vanguard Fixed-Inc. S/T Fed  
Vanguard Intrntnl Eqty Euro  
Vanguard Intrntnl Eqty Pac.  
Vanguard Money Market  
Vanguard Money Market-Prime  
Vanguard Money Market-Trsry  
Vanguard Muni Hi-Yld  
Vanguard Muni Insured L-Trm  
Vanguard Muni Inter.-Trm  
Vanguard Municipal L-Term  
Vanguard Municipal Shrt-Term  
Vanguard NJ Insrd L-Trm Muni  
Vanguard NY insured L-Trm  
Vanguard PA T/F fund  
Vanguard Preferred Stock  
Vanguard PRIMECAP  
Vanguard Specialized Energy

**New funds are continuously being added to our database!  
If your fund isn't listed give us a call!**

**1 - 800 - 251 - FUND(3863)**

## **VERTICAL SCROLL**

This allows the user to scroll vertically through the listed information.

## **HORIZONTAL SCROLL**

This allows the user to scroll horizontally through the listed information



**FIND - window**

Gives user ability to locate fund family quickly. This is done by typing in the fund family name.

**OK - button**

This command proceeds with selected items.

**CANCEL - button**

This command cancels any adjustments just set.

## **ADD - button**

more info: [ADD](#)

## **DELETE - button**

The user can delete a Fund Family by highlighting it and depressing the delete button.

## **EDIT - button**

more info: [EDIT](#)

## **AUTOLOAD - button**

The user can select a Fund Group to Autoload. This is done by highlighting a Fund Group and depressing the Save Entry - button. Next, the user depresses on the Autoload - box to set the changes in action.

## **TYPE - window**

There are various types of funds available:

- User Defined
- Fund Families
- Objective



## **FUND GROUPS - window**

Listing of available Fund Groups to select from.

## **Icon Information - window**

Allows user to determine the function of an icon by placing the (mouse) pointer over the icon.

## **Drawing Function Information - window**

Displays steps for drawing functions.

## **Previous Fund - button**

Steps back to the previous fund in the group.

## **Select Current Fund - button**

Allows the user to select the Current Fund from from the funds in the group.

more info: [Select Current Fund](#)

## **Next Fund - button**

Steps to the next fund in the group.

**Symbol - window**

Displays the symbol of the Current Fund.

**Fund Name - window**

Displays the name of the Current Fund.



## **Available Indicators - window:**

more info:

Price History

Total Return

Relative Strength

Momentum

MACD

RSI

Stochastic

Moving Average

Mov Avg Crossover

MB Oscillator

Portfolio Performance

## **EDIT - button**

more info: [Edit](#)

The user is able to select various on screen colors for Relative Strenght. This is done by clicking on the color box.

## **Statistics**

The user can also calculate statistics along with their analysis. The statistics are displayed along the bottom of the chart.

The user can select to display the statistics by clicking on the display box.

Edit - (Statistics)

more info: [Edit](#)

The user is able to select various on screen colors for Fast Mov Avg. This is done by clicking on the color box. The user is also able to set the number of days in the Fast Moving Averages. This is done by entering the chosen number of days in the box.

The user is able to select various on screen colors for Slow Mov Avg. This is done by clicking on the color box. The user is also able to set the number of days in the Slow Moving Averages. This is done by entering the chosen number of days in the box.

## **AVAILABLE - window**

Statistics available to choose from:

Alpha

Beta

R-Sqrd

StdDev

Rel Vol

Alpha/sd

Treynor

Sharpe

Rtn Fund

Rtn Bbrk

## **SELECTED - window**

These are the Statistics selected from the Available box to be displayed.



## **ADD - button**

By clicking the Add - button the highlighted statistics in the Available - window are moved to the Selected - window.

## **DELETE-button**

By clicking the Delete - button, the highlighted statistics in the Selected - window are deleted.

## **TYPE - window**

There are various types of funds available:

Aggressive Growth

Growth

Growth & Income

Equity Income

Index

International Equity

Precious Metals

Specilized

Balanced

Flexible Portfolio

Gen. Corp Bond (S-M)

Gen. Corp Bond (L)

High Qlty Corp Bond (S-M)

High Qlty Corp Bond (L)

High Yield Corp Bond (Junk)

Gen. Gov Bond (S-M)

Gen. Gov Bond (L)

Mort-Backed Gov Bond

U.S. Treasury Bond (S-M)

U.S. Treasury Bond (L)

International Bond

Municipal Bond (S-M)

Municipal Bond (L)

High Yield

Muni Bond (Junk)

CA Municipal Bond

NY Municipal Bond

State Municipal Bond

## **TYPE - Window**

There are various types of funds available:

- User Defined
- Fund Families
- Objective
- All

## **FIND GROUPS - window**

Gives user ability to locate Fund Group quickly. This is done by typing in the Fund Group name.

## **SYMBOL - box**

Gives user ability to display Symbol.

These are the available Fund Groups.

The user is able to select various on screen colors for Individual Fund, Current Fund, and Benchmark. This is done by clicking on the color box. The user is also able to choose whether or not to display the Current Fund and Benchmark.



**Find**

Locates a Statistic Group by typing in the name.

The list of available Statistic Groups.

**ADD**

more info: ADD

**DELETE**

Deletes highlighted Statistic group in window.

## **EDIT**

more info: [EDIT](#)

**NAME - window**

Displays the Name of User developed statistics.  
(The name is editable).

## **Available-window**

These are the statistics available to the user:

Alpha

Beta

R-Sqrd

StdDev

Rel Vol

Alpha/sd

Treynor

Stanley

Sharpe

Life Rtn

Actv Rtn

1,3,6,9 Mon Rtn

1,2,3,5 Yr Rtn

## **SELECTED - window**

These are the Statistics selected from the Available - box to be displayed.



## **ADD - button**

By clicking the Add - button the highlighted statistics in the Available - window are moved to the Selected - window.

## **DELETE - button**

By clicking the Delete - button, the highlighted statistics in the Selected - window are deleted.

## **PERIOD STAT - window**

These are the Periods available to the user:

Lifetime

Active Window

1,3,6,9 Months

1,2,3 Years

## **RANK - button**

more info: Rank

## **SCRN - button**

more info: Screen

## **ALL - button**

more info: [ALL](#)

This is some of the data which is available to be viewed. Additional data is available thru the RANK, SCRN, and All button.

## **SCREEN - window**

These the parameters by which the user can screen.



## **SCREEN - box**

This is the item currently being screened.

## **LESS THAN - box**

This allows the user to specify the number less than to screen with.

## **GREATER THAN - box**

This allows the user to specify the number greater than to screen with.

## **SAVE ENTRY - button**

By clicking on the Save Entry - button, the user initiates the values.

These are the items available to rank.

## **Descending Rank**

Rank in reverse order.

## **Ascending Rank**

Rank in forward order.

## **COMM PORT - window**

Select the comm port which the modem is connected.



## **BAUD RATE - window**

Select the baud speed which your modem is capable of.

## **INITIALIZATION STRING - window**

Enter the proper initialization string.

**PHONE NUMBER - window**

The local calling number to MANHATTAN ANALYTICS, INC. Inc.

## **PASSWORD - window**

This is the user log on password.

This is some of the data which is available to be viewed. Additional data is available thru the RANK, SCRN, and All button.

## **RANK - button**

more info: [RANK](#)

## **SCRN - button**

more info: SCREEN

## **ALL - button**

more info: [ALL](#)



**GROUP NAME**

The Group Name of the currently displayed Funds.

## **BENCHMARK**

The Benchmark is selected by first highlighting the Fund in the Available Fund - window and depressing the Benchmark - button.

**FIND - window**

Gives user ability to locate a Fund Group quickly. This is done by typing in the Fund Group name.

**FIND - window**

Gives user ability to locate the Available Funds quickly. This is done by typing in the Available Fund name.

## **SYMBOL - box**

Gives user ability to display Symbol. This is done by clicking on the box.

## **AVAILABLE FUNDS - window**

Listing of Available Funds to select from.

## **SELECTED FUNDS - window**

Listing of Selected Funds to select from.

## **TYPE - window**

There are various types of funds available:

Aggressive Growth

Growth

Growth & Income

Equity Income

Index

International Equity

Precious Metals

Specilized

Balanced

Flexible Portfolio

Gen. Corp Bond (S-M)

Gen. Corp Bond (L)

High Qlty Corp Bond (S-M)

High Qlty Corp Bond (L)

High Yield Corp Bond (Junk)

Gen. Gov Bond (S-M)

Gen. Gov Bond (L)

Mort-Backed Gov Bond

U.S. Treasury Bond (S-M)

U.S. Treasury Bond (L)

International Bond

Municipal Bond (S-M)

Municipal Bond (L)

High Yield

Muni Bond (Junk)

CA Municipal Bond

NY Municipal Bond

State Municipal Bond



## **TYPE - Window**

There are various types of funds available:

- User Defined
- Fund Families
- Objective
- All

## **PERIOD STAT - window**

These are the Periods available to the user:

Lifetime

Active Window

1,3,6,9 Months

1,2,3 Years

**ADD - button**

By clicking the Add - button the highlighted Fund in the Available - window are moved to the Selected - window.

## **DELETE - button**

By clicking the Delete - button, the highlighted statistics in the Selected - window are deleted.

## **ADD - button**

more info: [ADD](#)

## **DELETE - button**

Delete highlighted portfolio.

## **EDIT - button**

more info: [EDIT](#)

## **PRICE**

Display Price as vertical scale on chart.



## **PERCENT RETURN**

Display Percent Return as vertical scale on chart.

## **PORTFOLIO GROUPS - window**

These are the current Portfolio Groups listed. The user is also able to add or edit new Portfolios.

The user can change various colors by clicking the colored boxes. The user also has the choice to display the Current Fund. This is done by clicking the Current Fund - box.

## **Statistics**

The user can also calculate statistics along with their analysis. The statistics are displayed along the bottom of the chart.

The user can select to display the statistics by clicking on the display - box.

Edit - (Statistics)

more info: [Edit](#)

**Find - window**

Locates a Portfolio Group by typing in the name.

Name of the portfolio.

**Find - window**

Locates a Fund by typing in the name.

**ADD - button**

By clicking the Add - button the highlighted Fund in the Available - window is moved to the Selected - window.



## **DELETE - button**

By clicking the Delete - button, the highlighted Fund in the Selected - window is deleted.

**FUND NAME - window**

This displays the name of the Fund currently highlighted.

## **Available - window**

These are the current funds available to the user.

## **SELECTED - window**

These are the Funds selected from the Available box to be included in the custom portfolio.

## **WEIGHTING**

This is the user definable weighting. Once the value is entered, the user should click on Save Entry - button to initiate the changes.

## **FUND GROUPS - button**

more info: [FUND GROUPS](#)

## **STATISTICAL GROUPS -button**

more info: [STATISTICAL GROUPS](#)

## **LOAD INDIVIDUAL FUND - button**

more info: [LOAD INDIVIDUAL FUND](#)



## **LATEST PRICING - button**

more info: [LATEST PRICING](#)

## **SELECT INDICATOR - button**

more info: [SELECT INDICATOR](#)

## **PORTFOLIO MANAGER - button**

more info: PORTFOLIO MANAGER

## **FUND INFORMATION - button**

more info: [FUND INFORMATION](#)

The user can change the color of the FUND and the INDEX by clicking the colored boxes until the desired color is achieved.

## **Statistics**

The user can also calculate statistics along with their analysis. The statistics are displayed along the bottom of the chart.

The user can select to display the statistics by clicking on the display box.

Edit - (Statistics)

more info: [Edit](#)

The user can change the color of the FUND and the INDEX,, by clicking the colored boxes until the desired color is achieved.

### Statistics

The user can also calculate statistics along with their analysis. The statistics are displayed along the bottom of the chart.

The user can select to display the statistics by clicking on the display box.

Edit - (Statistics)

more info: [Edit](#)



The user can change the color of the Fast Moving Average, Slow Moving Average, and the Fund, by clicking the colored boxes until the desired color is achieved. The user is also able to specify the Periods of the Fast and Slow Moving Averages. This is accomplished by entering their choice of days in the appropriate corresponding boxes.

### Statistics

The user can also calculate statistics along with their analysis. The statistics are displayed along the bottom of the chart.

The user can select to display the statistics by clicking on the display box.

Edit - (Statistics)

more info: [Edit](#)

The user can change the color of the Fast Moving Average, Slow Moving Average, and the Relative Strength, by clicking the colored boxes until the desired color is achieved. The user is also able to specify the Periods of the Fast and Slow Moving Averages. This is accomplished by entering their choice of days in the appropriate corresponding boxes.

### Statistics

The user can also calculate statistics along with their analysis. The statistics are displayed along the bottom of the chart.

The user can select to display the statistics by clicking on the display box.

Edit - (Statistics)

more info: [Edit](#)

### Statistics

The user can also calculate statistics along with their analysis. The statistics are displayed along the bottom of the chart.

The user can select to display the statistics by clicking on the display box.

Edit - (Statistics)

more info: [Edit](#)

The user can change the color of the Stochastic, %K Slowing Period, %D Period (Trigger), by clicking the colored boxes until the desired color is achieved. The user is also able to specify the Stochastic, %K Period, %K Slowing Period, %D Period (Trigger). This is accomplished by entering their choice of days in the appropriate corresponding boxes.

The user can change the color of the Relative Strength Indicator RSI, by clicking the colored boxes until the desired color is achieved. The user is also able to specify the Periods of the Period. This is accomplished by entering their choice of days in the appropriate corresponding box.

### Statistics

The user can also calculate statistics along with their analysis. The statistics are displayed along the bottom of the chart.

The user can select to display the statistics by clicking on the display box.

Edit - (Statistics)

more info: [Edit](#)



The user can change the color of the MACD, Fast MA, by clicking the colored boxes until the desired color is achieved. The user is also able to specify the Periods of the MACD, Fast MA, Slow Mov AVG and Trigger Moving Avg. This is accomplished by entering their choice of days in the appropriate corresponding boxes.

### Statistics

The user can also calculate statistics along with their analysis. The statistics are displayed along the bottom of the chart.

The user can select to display the statistics by clicking on the display box.

Edit - (Statistics)

more info: [Edit](#)

The user can change the color of the Momentum, by clicking the colored boxes until the desired color is achieved. The user is also able to specify the Periods of the Period. This is accomplished by entering their choice of days in the appropriate corresponding box.

### Statistics

The user can also calculate statistics along with their analysis. The statistics are displayed along the bottom of the chart.

The user can select to display the statistics by clicking on the display box.

Edit - (Statistics)

more info: [Edit](#)

The user can change the color of the FW Indicator, by clicking the colored boxes until the desired color is achieved. The user is also able to specify the Periods of the Fast and Slow Moving Averages. This is accomplished by entering their choice of days in the appropriate corresponding boxes.

### Statistics

The user can also calculate statistics along with their analysis. The statistics are displayed along the bottom of the chart.

The user can select to display the statistics by clicking on the display box.

Edit - (Statistics)

more info: [Edit](#)

The user can change the color of the Mov Avg Crossover, Fast Moving Average, and Slow Moving Average, by clicking the colored boxes until the desired color is achieved. The user is also able to specify the Periods of the Fast and Slow Moving Averages. This is accomplished by entering their choice of days in the appropriate corresponding boxes.

### Statistics

The user can also calculate statistics along with their analysis. The statistics are displayed along the bottom of the chart.

The user can select to display the statistics by clicking on the display box.

Edit - (Statistics)

more info: [Edit](#)



## **HEADER**

The user can specify a Header to be printed on the chart.

**FOOTER**

The user can specify a FOOTER to be printed on the chart.

By clicking on the Include Title - box, the user selects to include the title in the printing of the chart.

The highlighted item is designated to be printed.

Refer to Microsoft Windows 3.1 Reference manual additional information.

The user has 16 customizable colors to choose from. The highlighted Color X is displayed in the color box to the right.

The color box displays the Color X currently highlighted.

## **EDIT**

more info: [EDIT](#)



## **BASIC COLORS**

These are the basic colors available to the user for selecting the base 16 colors.

## **CUSTOM COLORS**

These are the custom colors the user can fill with the 16 colors of their own preference.

## **DEFINE CUSTOM COLORS**

more info: [DEFINE CUSTOM COLORS](#)

**SUBJECT - window**

These are the Subject of the files recieved from MANHATTAN ANALYTICS, INC..

FILE - box  
File name of the highlighted subject.

## **OPEN - button**

Open highlighted subject.

**DELETE**

Delete the highlighted message.

**DONE**

Exit message window.



**TITLE**

Title of message to send.

**FILE**

The file name.

These are the available file messages to send.

## **UPDATE - button**

Update the current file message to be sent.

**ADD**

more info: ADD

**DELETE**

Delete the highlighted file.

**BROWSE**

Browse thru system for file name.

## **EDIT**

more info: [EDIT](#)



## **AVAILABLE**

Statistics available to choose from:

Days Invested

Trades

Profit

Max Gain

Max Loss

Avg Trade

Return Timing

Return BchMrk

Return Fund

## **SELECTED**

These are the Statistics selected from the Available box to be displayed.

**ADD - button**

By clicking the Add button the highlighted statistics in the Available window are moved to the selected window.

## **DELETE-button**

By clicking the Delete button, the highlighted statistics in the Selected window are deleted.

## **EDIT**

more info: [EDIT](#)

## **AVAILABLE**

Statistics available to choose from:

Days Invested

Trades

Max Gain

Max Loss

Avg Trade

Return Timing

Return BchMrk

Return Fund

## **SELECTED**

These are the Statistics selected from the Available box to be displayed.

**ADD - button**

By clicking the Add button the highlighted statistics in the Available window are moved to the selected window.



## **DELETE-button**

By clicking the Delete button, the highlighted statistics in the Selected window are deleted.

## **FUNDS - window**

Listing of Funds to select from.

**FUND NAME**

The Fund Name of the currently highlighted symbol.

**Find - window**

Locates a Fund by typing in the name.

## **TYPE - window**

There are various types of funds available:

Aggressive Growth

Growth

Growth & Income

Equity Income

Index

International Equity

Precious Metals

Specilized

Balanced

Flexible Portfolio

Gen. Corp Bond (S-M)

Gen. Corp Bond (L)

High Qlty Corp Bond (S-M)

High Qlty Corp Bond (L)

High Yield Corp Bond (Junk)

Gen. Gov Bond (S-M)

Gen. Gov Bond (L)

Mort-Backed Gov Bond

U.S. Treasury Bond (S-M)

U.S. Treasury Bond (L)

International Bond

Municipal Bond (S-M)

Municipal Bond (L)

High Yield

Muni Bond (Junk)

CA Municipal Bond

NY Municipal Bond

State Municipal Bond

## **Regression Interval**

This allows the user to specify the parameter of the Regression Interval.

more info: [Regression Interval](#)

## **Timing Indicator Delay**

This allows the user to specify the parameter of the Timing Indicator Delay.

more info: [Timing Indicator Delay](#)

## **Timing Filter (%)**

This allows the user to specify the parameter of the Filter (%).

more info: [Filter \(%\)](#)



## **T BILL**

This allows the user to specify the parameter of the T BILL.

more info: [T BILL](#)

## **Subject - window**

These are the subjects of the messages being sent.

**File - window**

This displays the highlighted message from the above Subject - window.

**OPEN - button**

Opens the highlighted topic in the Subject - window.

**DELETE - button**

Deletes the highlighted topic in the Subject - window.



